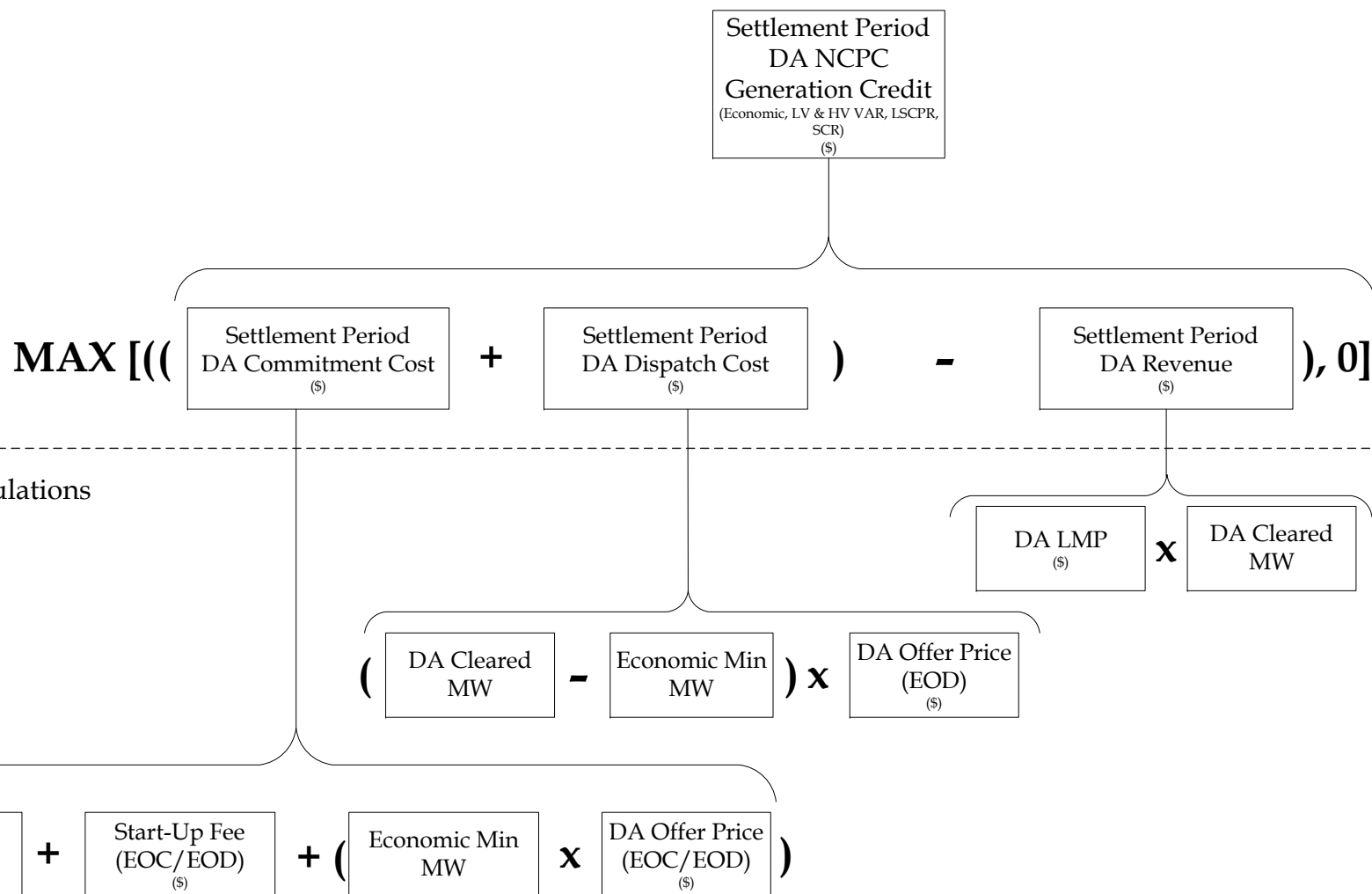


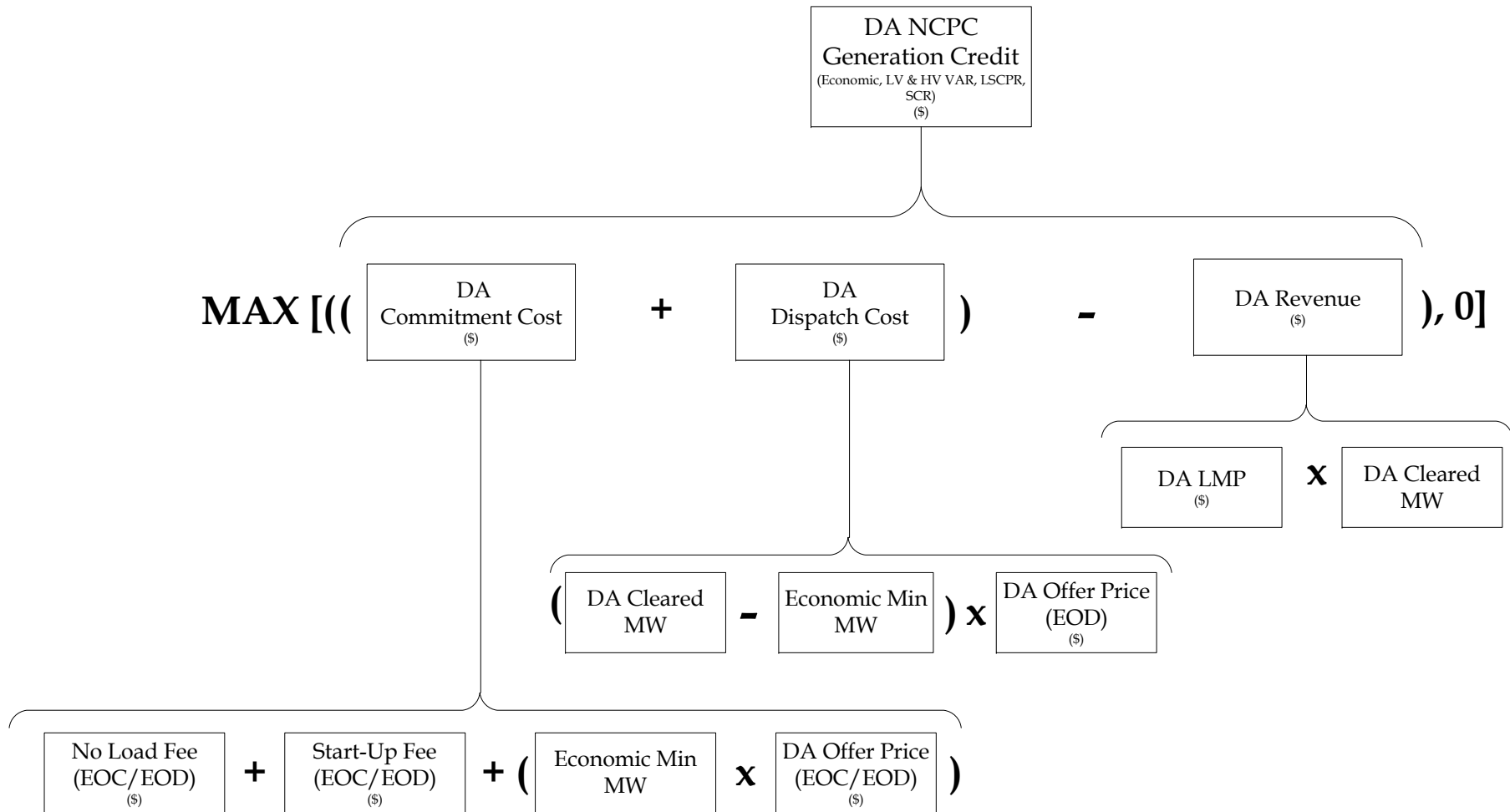
Note: The relevant ISO New England Markets, Services and Transmission Tariff and the relevant Market Manuals, Operating Procedures and Planning Procedures shall govern.

Acronyms	
Acronym	Definition
CA	Charge Allocation
CET	Coordinated External Transaction
DA	Day-Ahead
DARD	Dispatchable Asset Related Demand
DRR	Demand Response Resource
EOC	Effective Offer for Commitment
EOD	Effective Offer for Dispatch
ESD	Energy Storage Device
HV VAR	High Voltage VAR
LMP	Locational Marginal Price
LSCPR	Local Second Contingency Protection Resource
LV VAR	Low Voltage VAR
NCPC	Net Commitment Period Compensation
RR	Reliability Region
RT	Real-Time
SCR	Special Constraint Resource
Related Calculation Summaries	
Calculation Summary	Related Market
energy_market_calc_sum	Energy Market
Related Market Information Server (MIS) and World-wide Web (WW) Reports	
Report Code	Report Long Name
SD_DANCPCDARD	Day-Ahead DARD Commitment Report
SD_DANCPCDRR	Day-Ahead Demand Response Resource Commitment and Dispatch Report
SD_DANCPCGEN	Day-Ahead Generator Commitment and Dispatch Report
SD_DANCPCPYMT	Day-Ahead Net Commitment Period Compensation Payment Report
SR_DANCPCSTLMNTSUM	DA NCPC Settlement Summary Report

Settlement Period Calculation

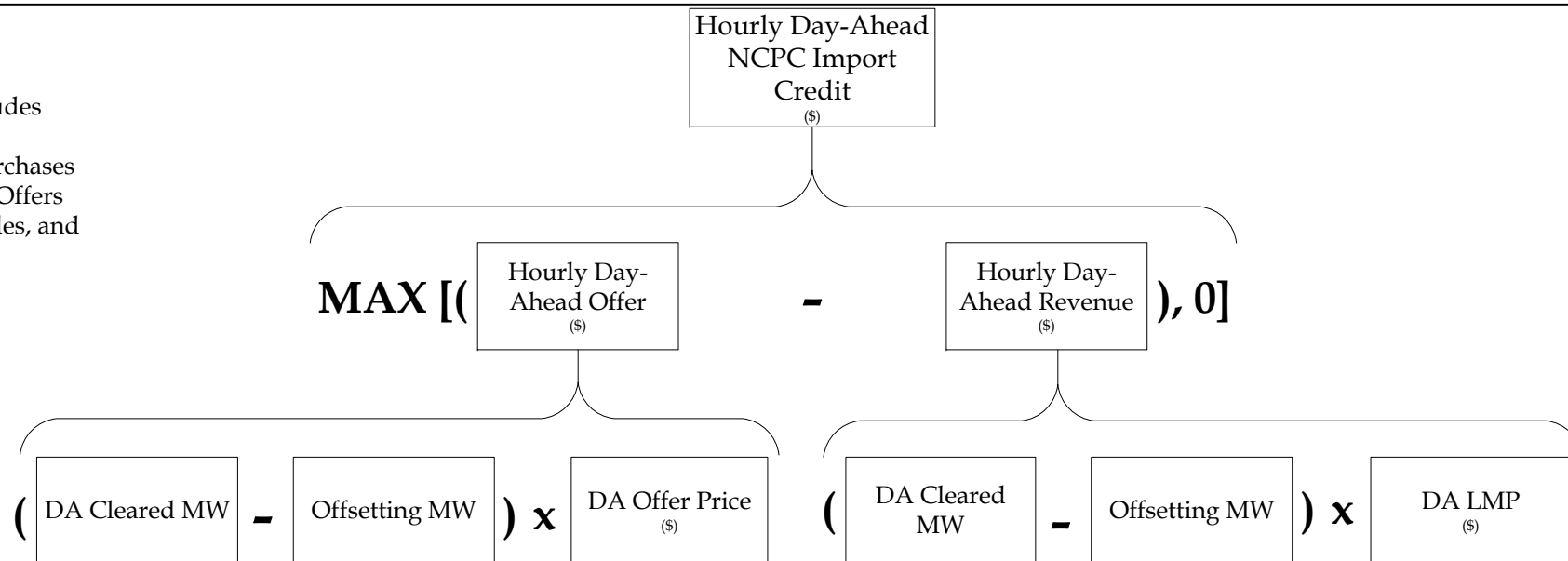


Hourly Calculation



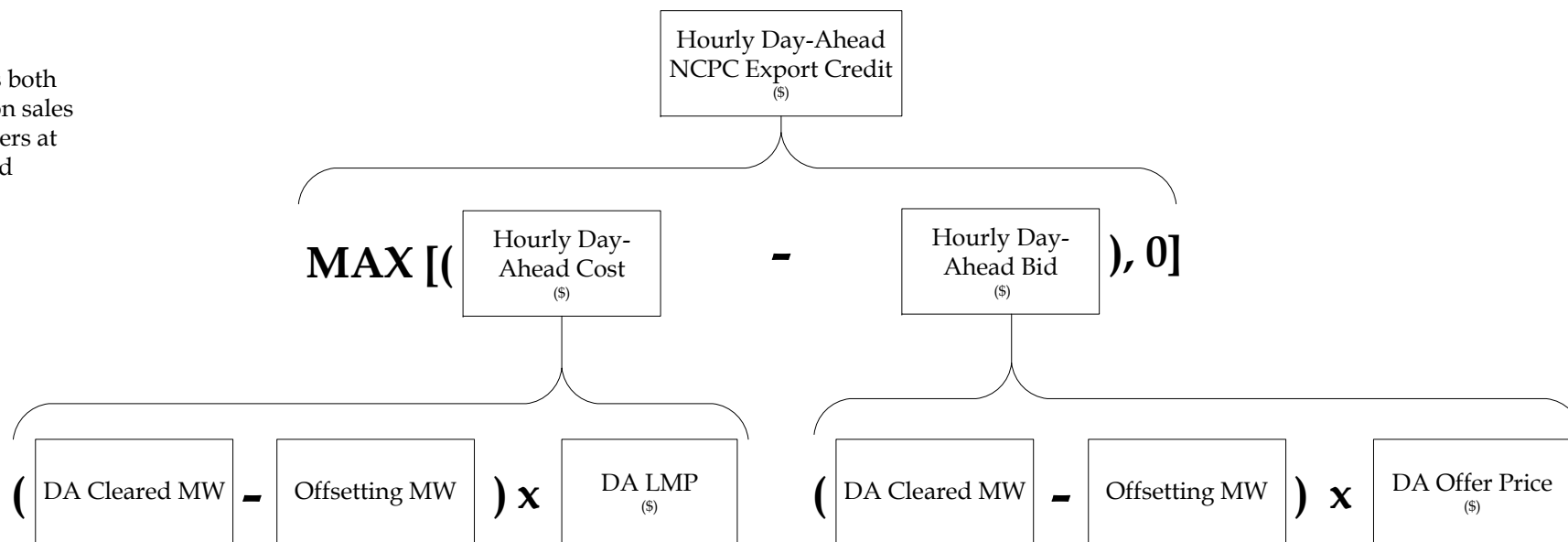
IMPORTS

Note: This includes both External Transaction purchases and Increment Offers at External Nodes, and excludes CETs.



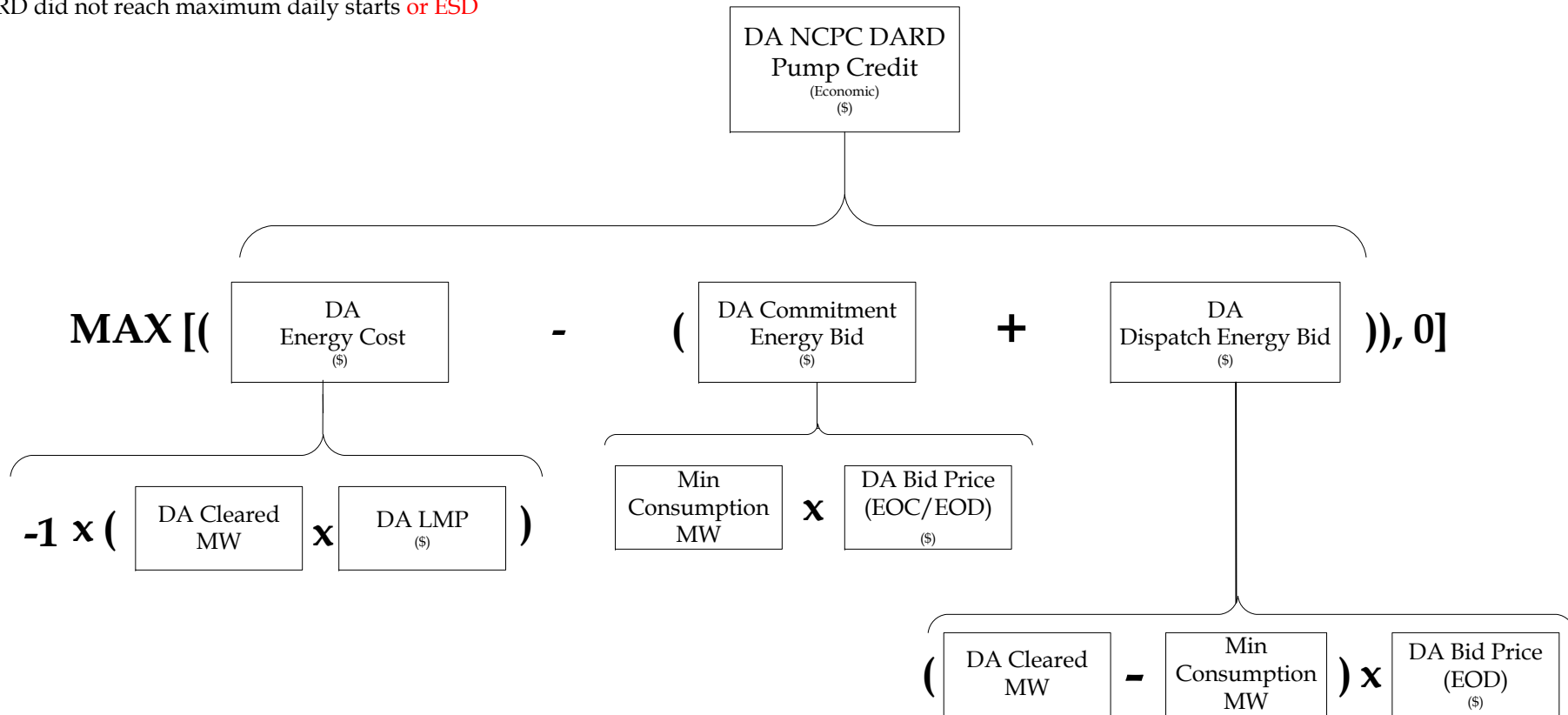
EXPORTS

Note: This includes both External Transaction sales and Decrement Offers at External Nodes, and excludes CETs.



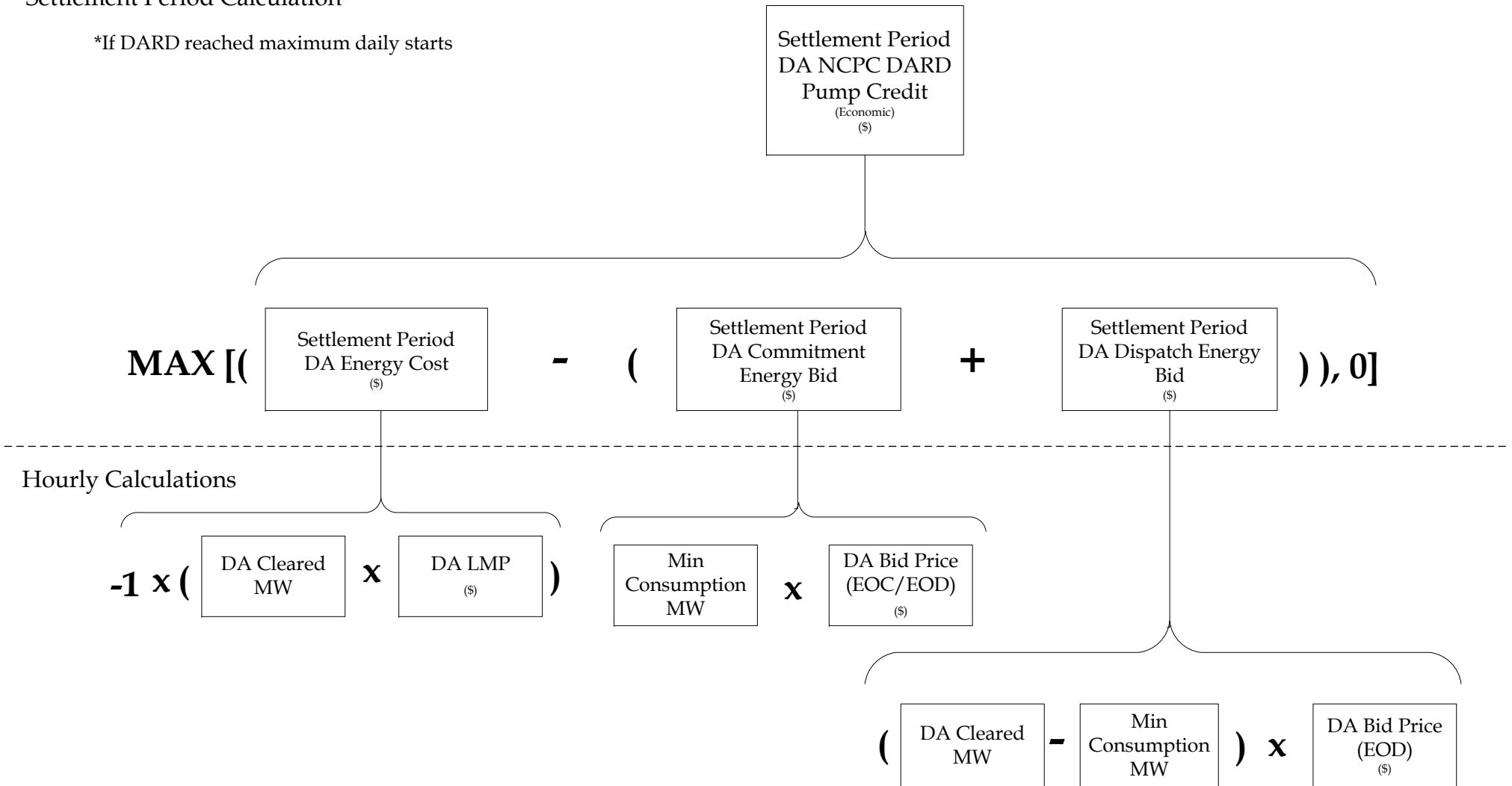
Hourly Calculation

*If DARD did not reach maximum daily starts or ESD



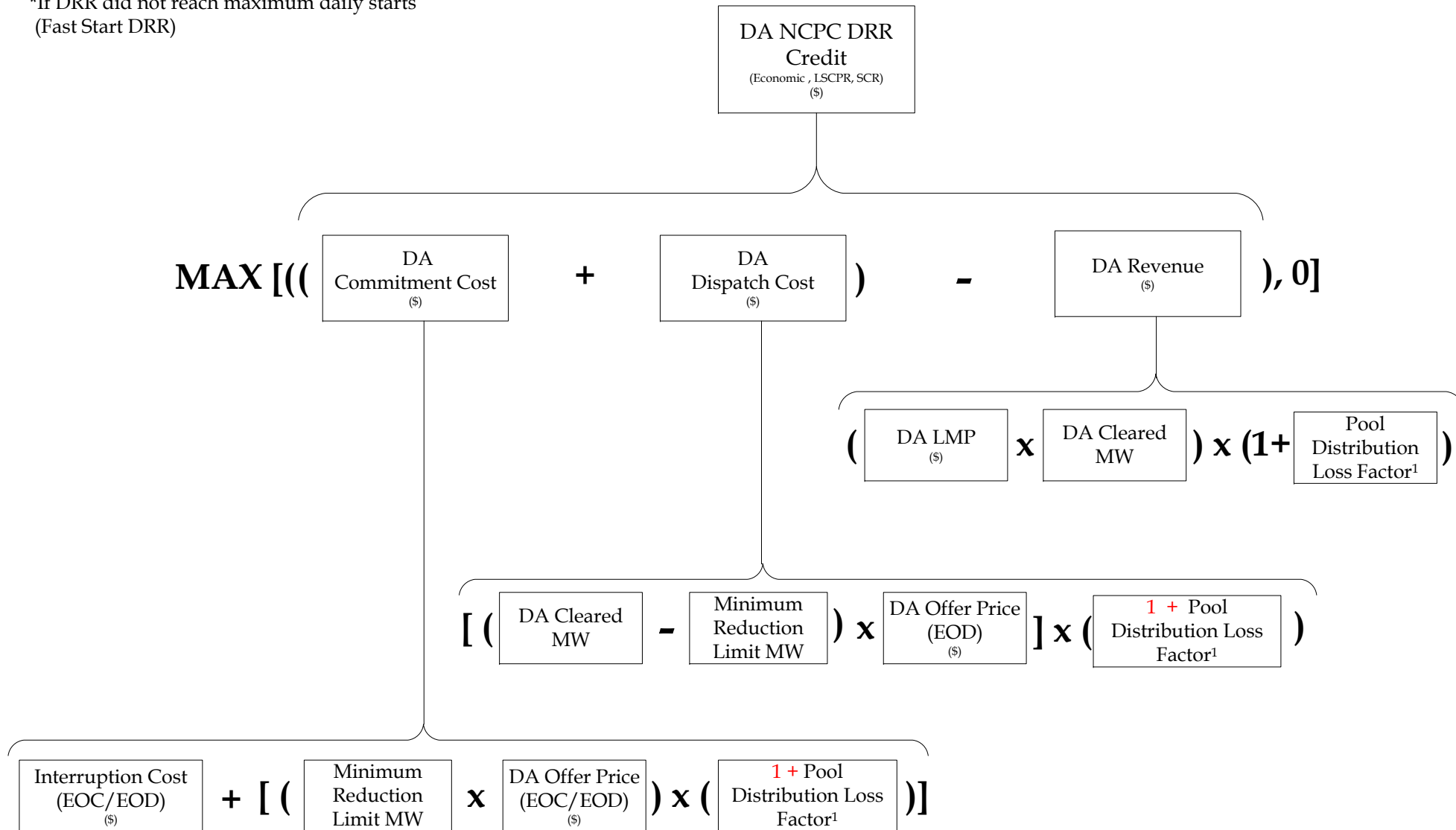
Settlement Period Calculation

*If DARD reached maximum daily starts



Hourly Calculation

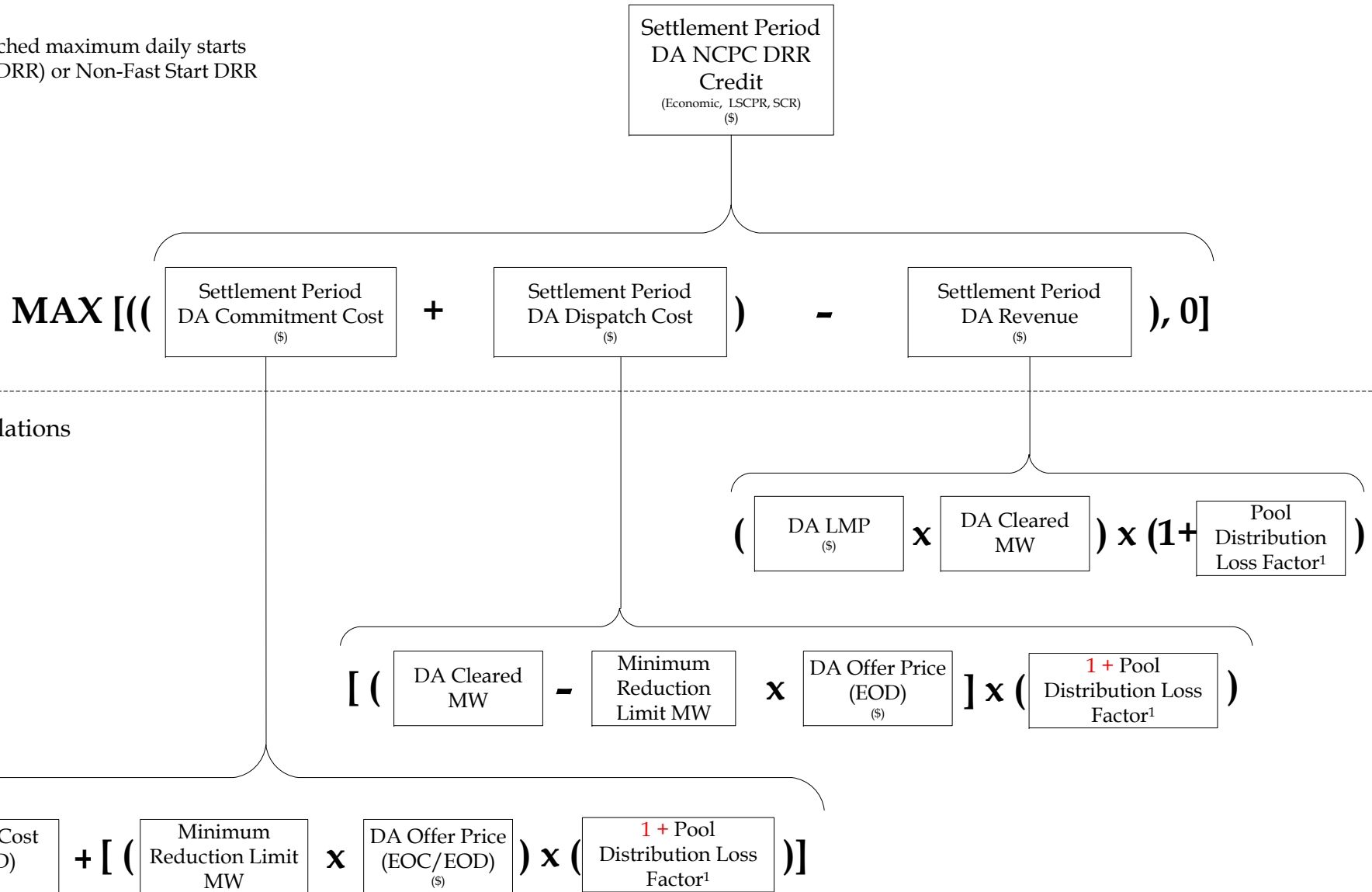
*If DRR did not reach maximum daily starts (Fast Start DRR)



¹ Current value is 0.055

Settlement Period Calculation

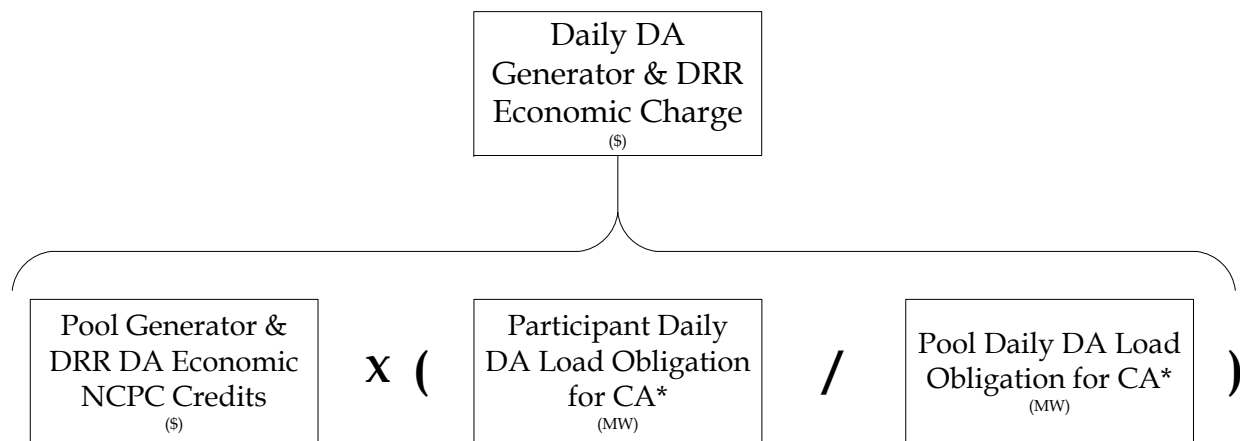
*If DRR reached maximum daily starts (Fast Start DRR) or Non-Fast Start DRR



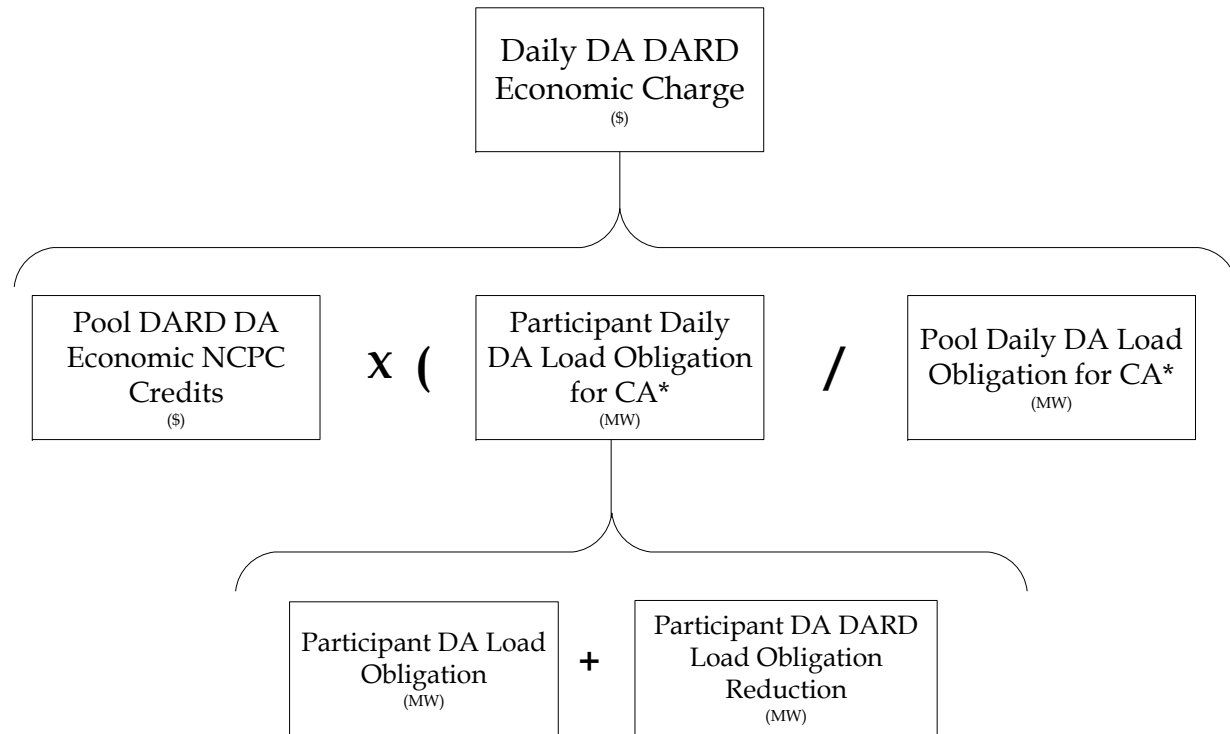
¹ Current value is 0.055

Note: The relevant ISO New England Markets, Services and Transmission Tariff and the relevant Market Manuals, Operating Procedures and Planning Procedures shall govern.

DA Generator & DRR NCPC Economic Charge ISO New England Calculation Summary

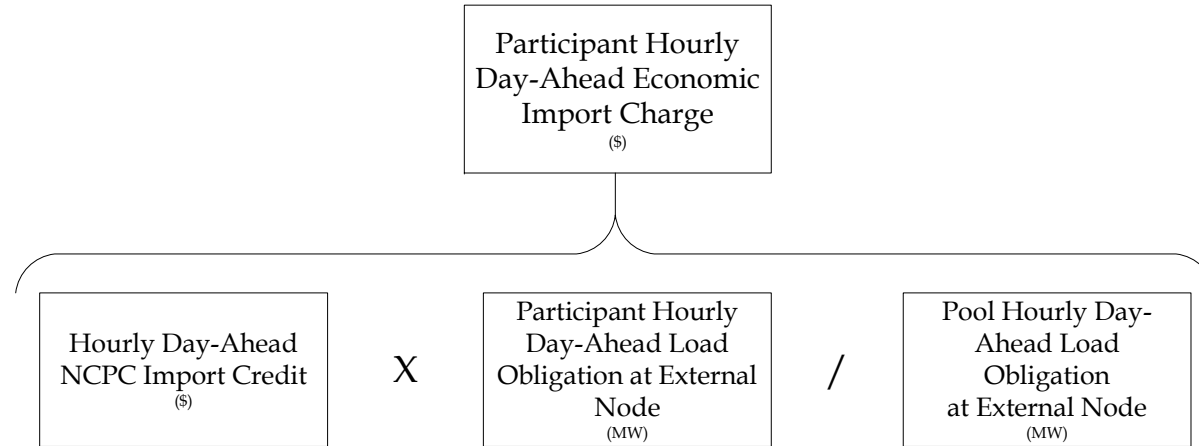


*Excludes Coordinated External Transactions

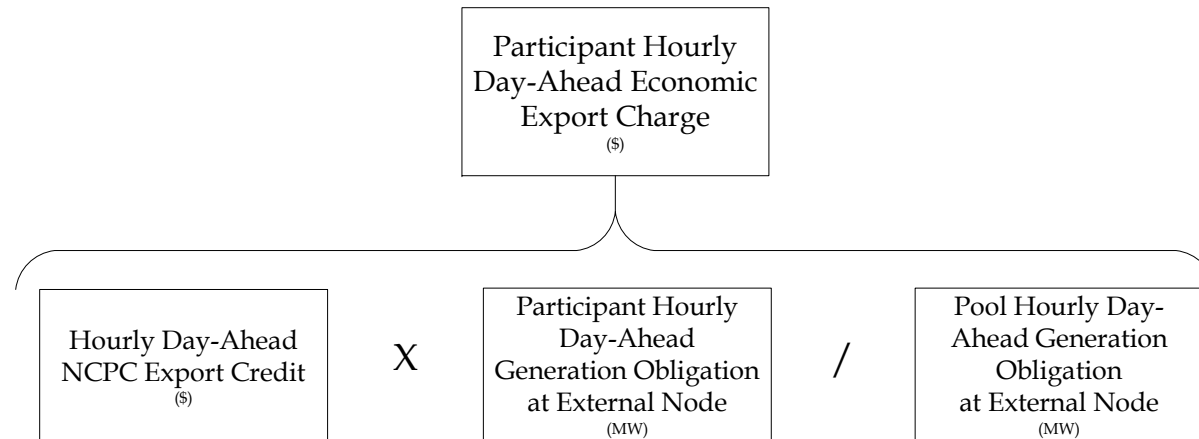


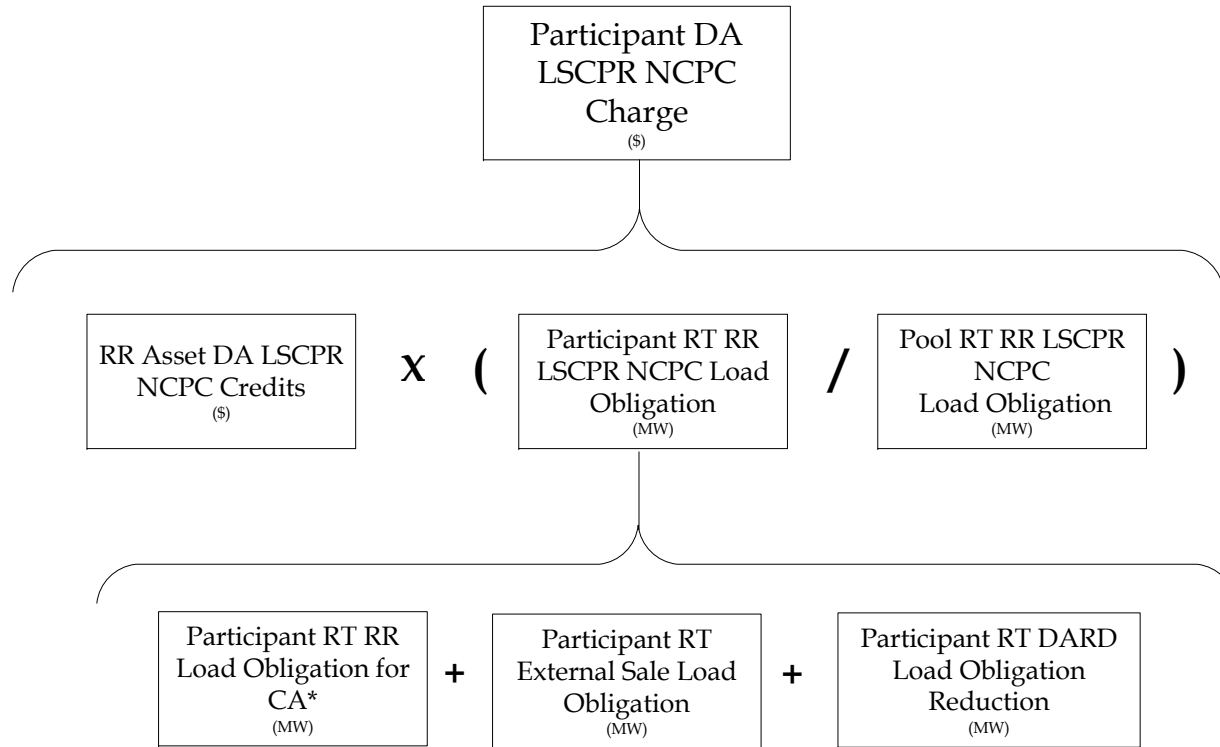
*Excludes Coordinated External Transactions

IMPORTS



EXPORTS





*Excludes Coordinated External Transactions